

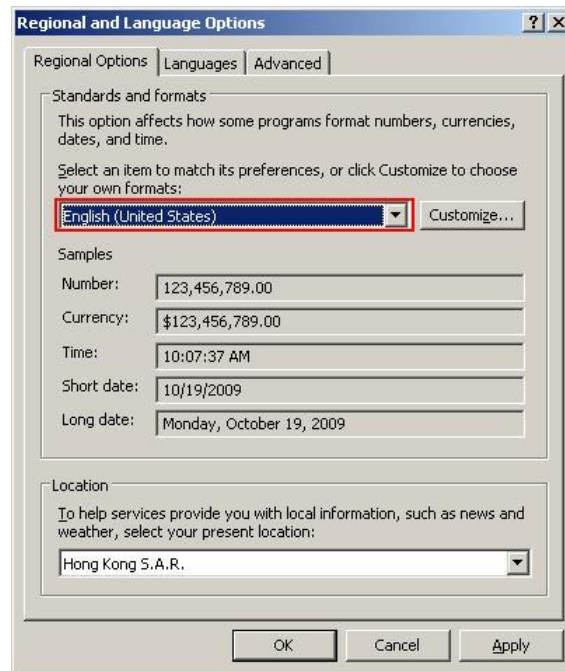
# Supplementary installation guide of PASW Statistics 18 for Chinese Operating System

---

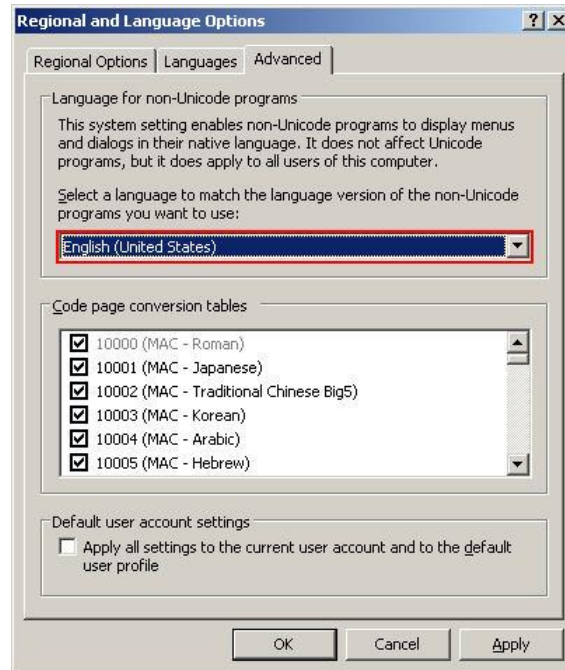
## Installing PASW Statistics 18 in English

By default, the setup program of PASW Statistics 18 refers to the system language setting of the OS to determine the display language throughout the installation process, and set also the GUI (Graphical User Interface) language when it first starts up. Some users may find it inconvenient especially to those foreign students or researchers who work in Hong Kong and use the computers provided by their institutions. To get rid of this, users could use the following procedure to change the OS' system language such that the installation language of PASW Statistics 18 will be switched to English.

- Open **Control Panel / 控制台** and choose **Regional and Language Options / 地區及語言選項**
- In the **Regional and Language Options** dialog box, change the **Standards and formats / 標準及格式** to **English (United States) / 英文（美國）**



- Switch to **Advanced / 進階** tab, change the **Language for non-Unicode programs / 非 Unicode 程式的語言** to **English (United States) / 英文（美國）**



- Reboot your computer and install Statistics 18
- Change back the language setting as before if you wish

## Fixing the locale problem in PASW Statistics 18

Users may encounter the following warning message in PASW Statistics 18:

```
Warning # 849 in column 23. Text: zh_HK
The LOCALE subcommand of the SET command has an invalid parameter. It could
not be mapped to a valid backend locale.
```

This text means that PASW Statistics 18 couldn't find a suitable locale to set as its default language. This problem is caused by the missing locale zh\_HK which PASW Statistics 18 does not originally support in loclmap.xml. We have entered this as an Enhancement request to have the server-locale name="zh\_HK" entered in loclmap.xml by default.

In the meantime if you encounter this issue please do the following:

- Log onto the computer as Administrator and locate the file loclmap.xml in the installation directory of PASW Statistics 18, i.e. **C:\Program Files\SPSSInc\PASWStatistics18**
- Open the xml file in an Editor and scroll down to **Chinese-Taiwan** and enter this line: server-locale name="zh\_HK" so that you have something like the example below (please note the correct spelling within loclmap.xml)

```
88
89 <client-locale name="Chinese-PRC">
90   <server-locale name="zh_CN.cp936"></server-locale>
91   <server-locale name="zh_CN.GBK"></server-locale>
92   <server-locale name="zh_CN.gbK"></server-locale>
93   <server-locale name="zh_CN.gbK"></server-locale>
94   <server-locale name="zh_CN"></server-locale>
95   <server-locale name="zh_CN.utf8"></server-locale>
96 </client-locale>
97
98 <client-locale name="Chinese-Taiwan">
99   <server-locale name="zh_HK"></server-locale>
100  <server-locale name="zh_TW.cp950"></server-locale>
101  <server-locale name="zh_TW.big5"></server-locale>
102  <server-locale name="zh_TW.BIG5"></server-locale>
103  <server-locale name="zh_TW.eucTW"></server-locale>
104  <server-locale name="zh_TW.Big5"></server-locale>
105  <server-locale name="zh_TW"></server-locale>
106  <server-locale name="zh_TW.utf8"></server-locale>
107 </client-locale>
108
```

- You can also use the attached loclmap.xml to replace the original one, i.e. **C:\Program Files\SPSSInc\PASWStatistics18\loclmap.xml**

## Manually changing the user interface of the PASW Statistics 18

If the user interface of your PASW Statistics 18 is already in Chinese and you would like to change it to English, please follow these procedures to change

- In the PASW Statistics 18 menu, choose **Edit->Options / 編輯->選項**
- Change the **Output / 輸出** and the **User Interface / 使用者介面** to **English / 英文**

